

## OpenCAD V.3

OpenCAD is the dental CAD solution for everyone. Beginners can quickly find their way around it thanks to the clear user interfaces; experts can use the diverse tools and open interfaces for more sophisticated work.

**Efficiency** – Various automatic functions (preparation limit recognition, removal of undercuts, construction of offset caps, connectors) speed up the manufacture of dental prostheses

**Safety** – Material-dependent automatic construction monitoring and parameter recommendations produce safe results.

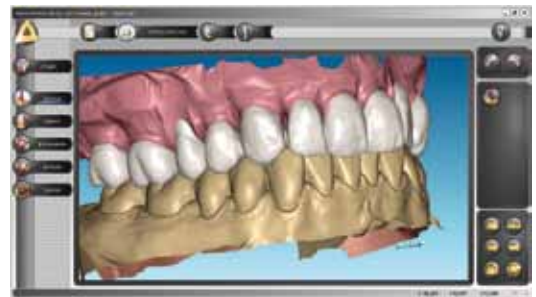
**Quality** – Various tooth shape databases are supplied with it; your own database can be created. Model individual details with the digital wax knife; import any mesh (attachment).

**Openness** - OpenCAD imports and exports data in STL format. Imported STL data can be prepared for construction with various tools.

**Cost effectiveness** – There are no ongoing licence costs; 12 months after purchase updates and upgrades are free.

### Construct and model with OpenCAD

- ✓ Coping and anatomical copings
- ✓ Anatomical crowns (reduced, partially reduced\*)
- ✓ Frameworks, bridges
- ✓ Inlays, Onlays, Veneers\*
- ✓ Telescopic crowns with secondary part
- ✓ WaxUp- and overpress-crowns (and -bridges\*)



### System requirements:

Windows7	
Memory	min. 4GB RAM
Grafic card nVIDIA	min. 512MB
Connector	1x USB
Monitor	min. 1280x1024
Article-No. A301005	OpenCAD V.3



## OpenCAD abutment module

The Abutment Module extends OpenCAD with functions for the construction of individual abutments and implant-supported work.

- ✓ Various implant systems and providers
- ✓ Custom abutments
- ✓ Implant Bars\*
- ✓ Implant-supported bridges and crowns

Article.-No. A301010 ..... Module Abutment  
(runs only with "OpenCAD V 3")



*\*Available in OpenCAD 4.0, to be released in Q3/2011*